

# **Chelan/ Douglas County**

## **Local Emergency Planning Committee**

### **Hazardous Materials Plan (LEPC Plan)**

*Revised: December 2005*

**Table of Contents**

<b>Topic</b>	<b>Page</b>
Goal	1
Purpose Statement	1
Limitations	1
General	1
Authority	1
Direction and Control of Hazardous Materials Response Activities	2-3
General	2
Organization	3
Concept of Operations	3-11
Procedures	3
Mitigation Activities	3
Preparedness Activity	3
Response Activities	4
Recovery Activities	4
Public Warning	4
Protection of the Public	4
Communications	5
Search and Rescue	5
Good Samaritan Law	5
Flammable Liquids	5
Agriculture Chemicals	5
Recovery and Cleanup	6
Responsibilities	6
Notifications	8
Training	9
Personal Protective Equipment	10
Exercises	10
Updating the Plan	10
Facilities and Transportation Routes	10
Facilities	11-17
Chelan County	11
Douglas County	18
Transportation Routes	20
Hazardous Materials Incident Guidelines	22
Appendix A – Suggested Response Safety Plan	23
General	23
Site Characteristics and Analysis	23
Work Practices	23
Decontamination	24
Site Emergencies	24
Site Control	24
Medical Surveillance	24
Illumination	24
Traffic Safety	24
Appendix B – Evacuation and Movement	25
Introduction	25
Policies	25
Situation	25
Concepts of Operations	26
General	26
Organization	26

## CHELAN/DOUGLAS COUNTY LEPC PLAN

---

Procedures	26
Preparedness Activities	26
Response Activities	27
Responsibilities	28
Resources Requirements	28
Generic Emergency Response Plan Checklist	29
Emergency Resources	30
Hazardous Materials Phone List	30
Local Response Resources	30
Petroleum Off-Loading	31
Public Works	31
Appendix C - Notification of "Good Samaritan" Law	33
Appendix D – Distribution List	34
Appendix E – Basic ICS Flow Chart	36
Appendix F – Definitions	37
Appendix G - Hazardous Materials Response Teams	40-44

**CHELAN/DOUGLAS COUNTY LEPC PLAN**

---

**Chelan County Commissioners**

---

Chairman, Commissioner Keith Goehner

---

Commissioner Ron Walter

---

Commissioner Buell Hawkins

**Chelan County Mayors**

---

City of Cashmere, Mayor Gordon Irle

---

City of Chelan, Mayor Mitch Atkinson

---

City of Entiat, Mayor Pro-Tem Joannie  
Wedlund

---

City of Leavenworth, Mayor William Bauer

---

City of Wenatchee, Mayor Dennis Johnson

**Chelan County Emergency Management**

---

Sheriff Mike Harum

**Douglas County Commissioners**

---

Chairman, Commissioner Dane Keane

---

Commissioner Ken Stanton

---

Commissioner Mary Hunt

**Douglas County Mayors**

---

City of East Wenatchee, Mayor Steven Lacy

---

City of Rock Island, Mayor Angela Larson

---

City of Waterville, Mayor Royal DeVaney

---

City of Bridgeport, Mayor Steven Jenkins

---

City of Mansfield, Mayor Tom Snell

**Douglas County Emergency Management**

---

Sheriff Dan LaRoche

---

LEPC Chairman, Chuck Johnson

**CHELAN/DOUGLAS COUNTY  
LOCAL EMERGENCY PLANNING COMMITTEE  
HAZARDOUS MATERIALS PLAN  
(LEPC PLAN)**

**GOAL:**

Help ensure the safe response to; and help provide protection to the public from a Hazardous Materials incident.

**PURPOSE AND SCOPE:**

The Hazardous Materials Emergency Response Plan is required under Washington State and federal law as part of the Community Right-to-Know Act (PL 99-499, 40 CFR 355, and WAC 118-40). The plan is written to cover the required jurisdictional boundaries for the Chelan/Douglas County LEPC described in the Washington Administrative Code. The Chelan/Douglas County LEPC covers all of Chelan and Douglas Counties.

This plan compliments and expands on sections in the Chelan County, Douglas County, and City of Wenatchee Emergency Management Plans. It is intended to assist governmental agencies, businesses and response entities in their response to the release of hazardous materials within the boundaries of Chelan or Douglas County resulting from naturally occurring events, industrial accidents, terrorism, or illegal activities.

The required scope of the plan identified under WAC 118-40 is restricted to fixed facilities with specific quantities of reportable materials. Releases of hazardous materials, however, may occur as the result of transportation activities on land or in the marine environment and at facilities exempt from reporting under SARA Title III. Oil spills fall outside the legal requirement of this plan. This plan endeavors to include contingencies for all these types of events.

This plan is intended to be coordinated with federal, state and other local plans, should the event require inter-jurisdictional coordination.

**LIMITATIONS:**

This plan is limited in scope by restrictions due to both financial and training constraints. With the extensive requirements put forth in 29 CFR 1910.120, and the Washington Administrative Codes, it is not feasible that Chelan or Douglas Counties can have and maintain a full Haz-Mat response team and/or equipment. Responding agencies to a hazardous materials incident will respond consistent with their training and capabilities.

**GENERAL:**

Public health and safety, and the protection of life and property are legal responsibilities of government. Government will perform emergency functions within their jurisdictional boundaries. Additionally they shall conduct such functions outside their jurisdictions as may be required pursuant to current resolutions, ordinances, mutual aid agreements, and RCW 38.52 (as amended).

**AUTHORITIES:**

This plan is written consistent with:

29 CFR 1910.120  
Title 3 of the Superfund Amendments Reauthorization Act (PL 99-499)  
WAC 118-40  
RCW 70.136  
RCW 38.52 (as amended)  
WAC 296-305

**PLANNING ASSUMPTIONS:**

- The Chelan/Douglas County area has no Haz-Mat team; however, there is a local anhydrous ammonia response team available.
- Support for a large scale Haz-Mat incident will have to come from out of the area.
- There are several facilities and transportation routes which could sustain a hazardous materials incident, most of these have been identified in this plan.
- Washington State Department of Ecology will assist in situations beyond the scope of the local authority.

**EMERGENCY/DISASTER HAZARDS AND CONDITIONS:**

Hazardous materials are transported, stored and used throughout Chelan and Douglas counties daily.

Conditions that could lead to a hazardous materials incident include, but are not limited to: Traffic accidents, train derailments, earthquakes, sabotage/terrorist activities, and severe weather conditions.

Chelan and Douglas Counties have had several hazardous materials incidents over the past 10 years. These have been minimal in nature. The chemical mostly involved has been Anhydrous Ammonia. This type of release has come from cold storage warehouses. In recent years, there has been an increase in ammonia releases due to theft. There have been Chlorine releases, several fuel (gasoline/diesel) spills and some ag-chemical related incidents over the same period.

**DIRECTION AND CONTROL OF HAZARDOUS MATERIALS RESPONSE ACTIVITIES**

**General:**

Local command of a hazardous materials incident will follow the concepts of the Incident Command System (ICS) and the National Incident Management System (NIMS).

The affected facility has the responsibility for mitigating the adverse effects of the release, within their capabilities and training.

The affected political subdivision has the primary responsibility for protecting life, property and environment threatened by hazardous material incidents except in those areas specifically preempted by state or federal law. As necessary the Washington State Patrol and local public safety agencies are primarily responsible for initial assessment of the situation, attempt identification of materials involved, incident coordination, securing the site, rescue and medical treatment of the injured if safe to do so, defensive measures or confinement if properly trained to do so and/or evacuation of people if endangered. Clean up is the responsibility of the spiller, if known.

When local agencies (fire services and/or law enforcement, etc.) have Incident Command responsibilities, the state and federal function will be to support and coordinate with the local responders, when requested.

When outside personnel and resources are working in support of local response agencies, private, state, or federal personnel will maintain their normal chain of command and supervision. They will respond to tasks and assignments through or in conjunction with the on-scene Incident Command System.

Upon notification of a Hazardous Materials Incident, Chelan County, Douglas County, and City of Wenatchee Emergency Management will obtain a state emergency management mission number to extend liability coverage to registered local volunteers and equipment responding in a specialized or general support capacity.

Response to a Hazardous Materials incident will be defensive in nature and responding departments will perform only to the level trained. Primary consideration will be given to protection of the public by either evacuation or in place protection.

Command of a Haz-Mat incident will be initially from a field command post location. The Emergency Operations Center may be activated if, in the opinion of the Incident Commander, direction and control of the incident can be better facilitated from the Emergency Operations Center.

**Organization:**

The Chelan/Douglas County's hazardous materials response is based on the unified command concept. The Washington State Patrol will assume the role of Incident Commander.

Incident command in a jurisdiction does not imply any innate ability to provide response resources or trained response personnel within the jurisdiction. It is meant solely to provide trained leadership and management of the existing and available resources to respond to the release or impending release.

Although hazardous material incidents will follow the concepts of NIMS and ICS, in most cases unified command will be utilized. The unified command will be made up of the incident command agency, local fire agency, along with the local law enforcement agency, and any other appropriate agency as determined by the Incident Command Authority.

Normal day to day organizational structures and chains of command will be maintained in government and supporting organizations.

### **CONCEPT OF OPERATIONS**

#### **Procedures:**

When a hazardous materials incident occurs, the Incident Command Agency should:

- Establish an isolation area and move all people out of the affected area.
- Establish perimeter control / area security.
- Identify Hot, Warm, and Cold Zone.
- Identify the hazardous material if safely possible.
- Make appropriate local, state, and federal notifications.
- Establish and identify command post and staging locations. Establish ICS using NIMS guidelines and framework.
- Develop an action plan
- Establish a site safety plan.
- Establish decontamination, as appropriate.
- Call for necessary help from mutual aid jurisdictions, state Department of Ecology and/or US EPA, as appropriate.
- Ensure public health departments are advised and incorporated into the command system.
- Monitor the progression of the incident.
- Work with appropriate agencies to determine site safety and when to declare the incident over and allow people back into the area.
- Hold a critique

#### **Mitigation Activities:**

- Work with facilities to further ideas to be used to reduce the amount of hazardous chemicals which are on site.
- Encourage businesses which use hazardous chemicals to develop and maintain such things as containment barriers.

#### **Preparedness Activities:**

- Maintain and update locations of where hazardous materials are stored, used and/or produced. Ensure all public safety responders are supplied with these materials (Tier II reporting).
- All agencies should ensure their personnel who have the potential of responding to a Haz-Mat incident have the appropriate level of training.
- Work with the LEPC to hold a hazardous materials exercise on an annual basis, with a full scale exercise every four years.
- Ensure all public safety agencies have adequate quantities of the US DOT Emergency Response Guide.
- All agencies shall ensure personnel have the appropriate level of Personal Protective Equipment (PPE) for expected response.

**Response Activities:**

- Establish command post. Shall be in cold zone, up hill, up wind and up stream from the incident.
- Size up situation and advise dispatch of situation and make request for additional resources, if appropriate.
- Isolate the area and deny further entry.
- Perform rescue, **if a knowledgeable and trained safety officer proclaims it is safe to do so.**
- Establish crowd and traffic control.
  - Ensure the Incident Command agency is notified.
  - Attempt to identify the materials - **WITHOUT RISK** - by use of:
    - Placards / labels
    - Shipping papers
- Haulers information
- Tier two information
- Any other available means
- MSDS
- Location
- Determine if there is a need to evacuate or shelter in place and take appropriate steps.
- Institute an emergency public information plan; keep the public informed through media contacts.
- Personnel shall not perform any work which is outside the scope of their training and capabilities.
- If needed, request assistance from Ecology Spill Response Team.
- Make all other appropriate notifications.

**Recovery Activities:**

- Ensure the release has ended and the area is safe to re-enter. This decision must come from the Incident Commander.
- Assist in clean up if it is appropriate and within abilities.
- Advise the public it is safe to return to the isolated area.
  - Conduct a post incident review.
  - Coordinate cost recovery, as appropriate through a designated financial section.

**Public Warning (Emergency Public Information/Warning):**

The Policy will be to follow the prescribed procedures as outlined in the Chelan County, Douglas County, and City of Wenatchee Comprehensive Emergency Management Plans.

**Protection of the public (See Appendix B for further):**

Protection of the public can be accomplished by either: (1) In place protection or (2) Evacuation.

In-place Protection

Determine area to be affected and develop a public information announcement telling people to:

- Go inside homes/buildings
- Close all doors and windows
- Shut off any outside air sources
- Fans
- Fireplace dampers
- HVAC (Heating, Ventilation & Air Conditioning) units as well as swamp coolers.
- Go to the most inside room with fewest windows/doors
- Take plastic sheeting and duct tape to cover & seal windows, doors, etc., place wet towels to seal gaps under doors
- DO NOT go into the basement (most toxic vapors are heavier than air).
- Take a portable radio to listen to official announcements
- Stay there until told it is safe to leave. Once it is safe to leave the home, instruct them to “air” out their house. Notification process may take some time due to people being deep inside their homes.

### Evacuation

If you choose to evacuation, then:

- Work as a team. This team may be fire department personnel, EMS and police. There should be a designated IC with a well prepared plan to follow.
- Determine area to be evacuated and approximate number of people to be evacuated.
- Contact Emergency Management for coordination with Red Cross.
- Determine evacuation routes - **DO NOT route evacuees through possible contaminated areas.**
- Establish traffic control points and implement them.
- WARN THE PUBLIC. Give evacuation orders and give the public instructions as to when to go and what to do. This may be accomplished through radio announcements, use of vehicle PA systems, by going door to door or any other means available.
- Have all evacuees check in at the Red Cross shelter whether they are going to stay there or not. This is for tracking purposes.

### **Communications:**

- Will follow prescribed procedures set forth by the jurisdiction which has initial responsibility for handling the incident.
- If the incident develops into a large scale and/or multi-agency incident, communications may be handled through either the Chelan or Douglas County mobile command post, as appropriate. Chelan County's mobile command post is located on the DEM shop in Sunnyslope. It has two (2) operator positions and two (2) control heads [one at each position] capable of communicating on several frequencies including: Fire F1, F2, F3, F4, HEAR, OSCCR, LERN, CCSO F1, F2, F3, and ECHO.
- Douglas County's Communications Bus, has 4 VHF public safety radios, 4 cell phones, 2 aircraft radios, CEMNET, 1 VHF and 1 UHF amateur radio (voice only), HVAC and 2 10 Kva generators.
- It will be the responsibility of the IC to make available a coordinator or liaison to assure communications between the incident command post and the communications facility.

### **Search and Rescue:**

Pursuant to RCW 38.52, Search and Rescue is the legal obligation of the local law enforcement agency. In the event of a hazardous materials release involving missing persons or the need for a rescue, the involvement of local law enforcement may not be practical because of safety issues. Personal Protective Equipment may be required to affect entry of the hot zone to effect search and rescue. Specific training is required as well as equipment and an adequate medical condition of members of the entry team must be established. **NOTE: There may be cases when no local responder will be able to perform state rescue activities.**

### **Good Samaritan Law:**

Pursuant to RCW 70.136.050, any person or public agency whose assistance has been requested by an incident command agency, who has entered into a written hazardous materials assistance agreement before or at the scene of the incident pursuant to RCW 70.136.060 and 70.136.070, and who, in good faith, renders emergency care, assistance, or advice with respect to a hazardous materials incident, is not liable for civil damages resulting from any act or omission in the rendering of such care, assistance, or advice, other than acts or omissions constituting gross negligence or willful or wanton misconduct.

### **Flammable liquids:**

Although flammable liquids are considered hazardous materials, most fire agencies have had specific training in this type of response. In the event of a flammable liquid incident, fire agencies may take actions consistent with their training and capabilities.

### **Ag-Chemicals:**

In the event of a Ag-Chemical, hazardous materials incident, where the Responsible Party is not known, the Incident Command agency may use persons who hold a valid Ag-Chemical applicators license to affect clean up, within that individual's training and capabilities.

**Recovery and Cleanup:**

Responsibilities for emergency actions are very different from those for cleanup of a hazardous materials event. While local fire agencies and/or Washington State Patrol may play a part in emergency response, they do not remain on the scene for cleanup. The responsible party (RP) must pay for cleanup (RCW 4.24.314) and where the RP is not identified or is unable to pay for cleanup, then the Washington Department of Ecology (WDOE) will be contacted and asked to provide cleanup. WDOE is the lead agency for overseeing the cleanup and disposal of hazardous materials and waste. The US EPA is the Incident Command agency for inland waterways and shares oversight with WDOE. In these cases EPA is the federal OSC/IC and WDOE is the state OSC/IC under a unified command structure.

**RESPONSIBILITIES:**

Legislative Authorities (County & Cities)

- Establish and make policy decisions
- Preserve the continuity of the legislative branch of local government.
- Make emergency proclamation as needed.
- Coordinate emergency operations and provide liaison, as required.
- Provide a declaration of authority to the Incident Commander.
- Direct the implementation of the emergency response and recovery plans.

Washington State Patrol:

- Assume Incident Command authority (RCW 70.136.030), as appropriate. (State Patrol has Incident Command authority in all of Chelan and Douglas Counties.
- Ensure personnel are appropriately trained.
- Provide coordination with state agencies.
- Assist Incident Command when requested.
- Scene control and security.

Washington State Department of Ecology:

- Assumes Incident Command Authority during incidents of oil spills to water (90.56.020) and or during the remedial phases of oil and hazardous materials responses.
- Respond to hazardous material spills that pose an imminent threat to life, health, and or the environment. Coordinates with other State and Local agencies.
- Responds to incidents by request of WSP, Fire, or other agencies to hazardous material spills and provides technical assistance, limited field operations, assistance with command and control.
- Conducts environmental assessments, investigations, and limited remediation.
- May hire remediation contractor in the event that no responsible party is known or is present during an emergency spill operation.

Fire Services:

- Fire Suppression.
- Response to hazardous material incidents
- Search and rescue activities, only when their level of protective equipment is appropriate for the incident as defined by the safety officer and technical specialists.
- Medial aid support.
- Evacuation support.
- Decontamination Support and emergency decontamination as appropriate.
- Provide representative to Emergency Operations Center, as requested
- Ensure personnel are properly trained.

Law Enforcement:

- Traffic and crowd control.
- Scene isolation and security.
- Assist with evacuation in the cold zone.

- Assist with warning and emergency information
- Conduct drug lab related activities where hazardous materials may be found.
- Provide a representative to the Emergency Operations Center, as requested.
- Participate in decontamination, as necessary
- Ensure personnel are properly trained.
- Provide PIO for incident.

Emergency Medical Services/Ambulance Companies:

- Patient care and transportation.
- Establish protocol for transporting of contaminated patients.
- On-scene medical surveillance of responders.
- Establish on-scene medical command and coordination with hospital, as appropriate.
- Ensure personnel are appropriately trained.
- Provide decontamination as needed.

Emergency Management:

- Warning and public information coordination.
- Providing mobile command post / communications support.
- Resource coordination.
  - Evacuation coordination with Red Cross.
  - Technical support, limited to CAMEO / ALOHA information and chemical plume modeling.
  - Providing First Responder Awareness and Operational level training, as requested.
- Coordination with WA. Department of Ecology.
- Provide support to the LEPC by:
  - Administrative support
  - Tier 2 data collection
  - Exercise design.
- Receiving and processing public request for chemical information, EPCRA.

Chelan/Douglas Health District

- Coordinate and provide emergency health services, including disease control, immunizations, quarantine procedures and support first aid needs as necessary through coordination with other agencies.
- Coordinate and provide environmental health services, including inspections for food & water contamination, inspections of temporary housing & disposal of solid waste.
- Conduct public information and education programs on health related issues.
- Provide a representative to the command staff liaison, as requested.
- Provide their decontamination trailer.

Human service organizations:

- Mass care of displaced persons which included, but not limited to:
  - Sheltering, Feeding, Clothing.
  - Psychological support, as appropriate.
  - Ensure personnel are properly trained.

Public works or Transportation Land Services:

- Heavy equipment support, as appropriate.
- Defensive material confinement support.
- Traffic control support.
- Ensure personnel are properly trained.
- Provide a representative to the liaison or operations chief as requested.

Chelan or Douglas County Assessor's Office:

- Coordinate and compile essential disaster analysis and damage assessment activities for their County.
- Assess property damage and provide assessments to the Legislative authority and emergency management.
- Provide a representative to the liaison or operations chief as requested.

Chelan or Douglas County Prosecuting Attorney:

- Advise their County government officials on legal matters relating to emergency authority and responsibility.
- Represent their County government in all criminal and civil proceedings in which it may be part as a result of emergency planning and operations.
- Provide a representative to the liaison or operations chief as requested.

Chelan County, Douglas County, and City of Wenatchee Wenatchee Facility Maintenance:

- Provide for maintenance, custodial services and security at all County facilities used for emergency operations.
- Provide a representative to the Emergency Operations Center, as requested.

Local Emergency Planning Committee:

- Provide information on facilities & phone numbers to response agencies.
- Provide a system for the public to receive information, per SARA Title 3.

Industry/Facilities:

- Provide for timely evacuation and site security for facilities affected by hazardous materials incidents.
- Provide for worker safety and shutdown of operations as needed during hazardous materials incidents.
- Provide timely public warning & notifications of hazardous releases from facilities.
- Coordinate activities with emergency management when releases affect utilities.
- Provide information to the media (via the public information officer).
- Make all notification required by law.
- Maintain and coordinate plans as required by law.
- Provide a representative to the command post or Emergency Operations Center, as requested. This person should have a chemical specialist background and knowledge of the affected facility and its operation. This person may be asked to function within the Unified Command structure.
- Perform emergency response within their personnel's training and capabilities.

**NOTIFICATIONS:**

FACILITIES

Facilities should have in place methods for determining if a release has occurred within the facility and if it may affect public health off-site. The facility will be responsible for notifying emergency response agencies by dialing 9-1-1 and providing the following:

- Facility's name and address.
- The name of the chemical being released, its UN number and CAS number.
- Estimated quantity released.
- Time and duration of the release.
- Medium into which the release occurred.
- Appropriate precaution, such as evacuation.
- The reactivity, health effects, toxicology and chemistry of the agent.
- Name and phone number of contact person. (Location for contact person if local emergency crews are responding.)

**If the release is such that human health or the environment is threatened, regardless of the quantity, the facility coordinator must:**

Contact: The Central regional office of the Washington Department of Ecology 24 hour spill reporting number: 1-800-258-5990 or 509-575-2490.

**If the quantity released is greater than the CERCLA REPORTING QUANTITY or the quantity listed under Section 313 of SARA Title III, the facility coordinator must:**

Contact: The Local Emergency Planning Committee: 1-509-667-6863 (M/F 8 am - 5 pm)  
1-509-663-9911 (24 hours: Chelan & Douglas)  
The State Emergency Response Commission: 1-800-258-5990  
The National Response Center: 1-800-424-8802

IN TRANSIT

In transit release will be done by the driver of the transporting vehicle by dialing 9-1-1 and providing the following:

- Location of the release / vehicle.
- The name of the chemical and UN number.
- Estimated quantity released.
- Capacity of the container holding the chemical.
- Medium into which the released occurred.

RESPONDERS

Public safety personnel that discover a hazardous materials incident shall notify their dispatch center and provide as much information as possible.

COMMUNICATION CENTERS

Public Safety Answering points (PSAP's), upon receiving a report of a potential hazardous materials incident will notify:

- The local fire district / department.
- The Washington State Patrol.
- The Chelan or Douglas County Emergency Management.
- The area law enforcement agency.

**TRAINING:**

It is the responsibility of individual departments to certify their personnel are appropriately trained to the proper level of response, at no time shall a responder exceed their level or training. 29 CFR 1910.120 identifies the following levels of training.

- First Responder Awareness Level - are those individuals who are likely to witness or discover a hazardous substance release and who have been trained to initiate an emergency response sequence by notifying the authorities of the release. Responders at this level must meet the competencies stated in 29 CFR 1910.120(q)(6)(i)(A-F)
- First Responder Operations Level - are those individuals who respond to releases or potential releases of hazardous substances as part of the initial response to the site for the purpose of protecting nearby persons, property, or the environment from the effects of the release. They are trained to respond in a defensive fashion without actually trying to stop the release. Their function is to contain the release from a safe distance, keep it from spreading, and prevent exposures. First responders at the operational level shall have received at least eight hours of training or have had sufficient experience to objectively demonstrate competency at the awareness level and competencies stated in 29 CFR 1910.120(q)(6)(ii)(A-F) and WAC 296-62-3112.
- Hazardous Materials Technician - are individuals who respond to releases or potential releases for the purpose of stopping the release. They assume a more aggressive role than a first responder at the operations level in that they will approach the point of release in order to plug, patch or otherwise stop the release of a hazardous substance. Hazardous materials technicians shall have received at least 24 hours of training equal to the first responder operations level and in addition have competency stated in 29 CFR 1910.120(q)(6)(iii)(A-I) and WAC 296-62-3112

- On Scene Incident Commander and specialists - are individuals who will assume control of the incident scene beyond the first responder awareness level, shall receive at least 24 hours of training equal to the first responder operations level and in addition meet the competencies in 29 CFR 1910.120(q)(6)(v)(A-F) and WAC 296-62-3112.

It is the responsibility of the industrial company, organization or employer to certify their personnel are appropriately trained to the proper level of response.

**PERSONAL PROTECTIVE EQUIPMENT (PPE):**

Personal Protective equipment for hazardous materials incidents has limitations in practical use. These limitations include: compatibility with the material(s), susceptibility to tears, abrasions, and heat degradation, limited time in the hot zone and the expense of keeping a full inventory of suits. Protective equipment is classified into Level A, Level B, Level C, and Level D.

- Level A

Fully encapsulated suit covering all body parts is made of a material resistant to the particular chemical released. Air is supplied by either a SCBA worn under the suit or from a supplied air system. The objective of Level A protection is to protect the wearer from airborne contaminants that may be absorbed through the skin or can cause exposure by inhalation. This or Level B must be worn in an IDLH atmosphere. An SCBA must be worn where an oxygen deficiency may exist.

- Level B

For trained Fire Department Personnel, an appropriate fully encapsulating Level B is required. Other responders may wear non-encapsulated level B suits. This or level A must be worn in an IDLH atmosphere. Level B can also be worn for emergency rescue.

- Level C

A splash suit covers all body parts, made out of chemical resistant materials for the particular chemical release. The air breathed by the person wearing the suit comes from a mask with filters specific to the material that may be airborne. This equipment may only be worn where the material(s) released is known, cartridges for the material are available, the air contains at least 19.5% oxygen, and no IDLH atmosphere exists.

- Level D

Ordinary work clothes, offer no specific protection from hazardous material releases. This includes fire fighting turnout bunkers, coveralls and rain suits without breathing protection.

Even chemically resistant suits must be maintained and inspected regularly. Exposure to light or chemicals can cause cracking, softening or general reduction in the chemical resistance of the material. Flashover suits are specialized for resistance to fire up to 1500F for 20 seconds.

**EXERCISES:**

Chelan County, Douglas County, or City of Wenatchee Emergency Management will design and hold Haz-Mat exercises on a regular schedule. The exercising of this plan may be done by either functional/full scale or table top style exercise.

**UPDATING THE PLAN:**

The plan shall be review annually and updated if necessary or following each test/exercise of the plan, as appropriate.

The Chelan/Douglas County Local Emergency Planning Committee is responsible for the annual exercise of the Hazardous Materials response plan.

**FACILITIES AND TRANSPORTATION ROUTES**

**FACILITIES:**

Chelan and Douglas Counties have several facilities which have hazardous materials on site. The following only address the facilities covered under Title 3 of the Superfund Amendments Reauthorization Act, and are reporting to the LEPC. Emergency responders must be aware of the common hazardous materials, such as gasoline and where these are located within their area of response. Chemicals on site include but may not be limited to the listed materials for each location.

**Chelan County:**

<p>Ag Supply Company 1115 N. Wenatchee Ave. Wenatchee, Wa 98801</p>	<p>Gasoline, Diesel Fuel, Lube Oil, Antifreeze, Propane, Kerosene</p>
<p>Alcoa Wenatchee Works 6200 Malaga Alcoa Hwy. Malaga, Wa 98828</p>	<p>Acetylene, Alumina, Aluminum, Aluminum Fluoride, Aluminum skim/dross, Anthracite Coal, Argon, Asbestos, Boiler Additives, Calcined Coke, Calcium and Magnesium Fluoride, Calcium Carbonate, Calcium Fluoride, Cast Iron, Chlorine, Coal Tar Pitch, Copper, Cryolite, Diesel Fuel, Diethylene Glycol, Ethylene Glycol, Ferrophosphorus, Ferrosilicon, Gasoline, Helium, Hydraulic/lubricating oils, Insulating oils, Kerosene, Magnesium, Mapp Gas, Methyl Naphthalene, Miscellaneous Refractories, Nitrogen, Nitrous Oxide, Oxygen, Paint/paint thinner, PCB, Pot Lining Carbon, Propane, Reacted Alumina, Silicon, Soda Ash, Sodium, Sodium Hydroxide, Soluble Oil, Spent Pot Lining, Stoddard Solvent, Strontium, Used Oils, Zinc</p>
<p>Amerigas Propane 4261 Hwy. 97A Wenatchee, Wa 98801</p>	<p>Liquid Petroleum Gas</p>
<p>Amergas Trout Facility 8 Howser RD. Chelan, Wa 98816</p>	<p>Liquid Petroleum Gas</p>
<p>Azwell Storage 425-25 Azwell RD. Pateros, Wa 98846</p>	<p>Anhydrous Ammonia</p>
<p>Bardin Farm Corp. P.O. Box 223 Monitor, Wa 98836</p>	<p>Ammonia, Paraffinic Hydrocarbon</p>
<p>Blue Star Growers INC. 428 Mission AVE. Cashmere, Wa 98815</p>	<p>Anhydrous Ammonia, Liquid Propane Gas</p>
<p>Blue Star Growers INC. 200 Blue Star Way Cashmere, Wa 98815</p>	<p>Anhydrous Ammonia, Liquid Propane Gas</p>
<p>Blue Star Growers INC.</p>	

**CHELAN/DOUGLAS COUNTY LEPC PLAN**

---

401 Mission AVE. Cashmere, Wa 98815	Anhydrous Ammonia
Burlington Northern Santa Fe U.S. 2 Berne, Wa 98826	Diesel Fuel #2
Cascade Distributing Company 1012 Walla AVE. Wenatchee, Wa 98801	Ammonium Nitrate, Azinphos Methyl, Carzol 92SP, Dimethoate 4 EC, Dithane Rainshield, Imidan, Grumoxane,
Central Washington Concrete 24 N. Worthen Wenatchee, Wa 98807	Cement
Central Washington Water 24 S. Wenatchee AVE. Wenatchee, Wa 98801	Bromo-N-Chloro Dimethyl-Hydantion, Sodium Dichlorsocynurite, Calcium Hypochlorie, FMB-210-15, Trichbro Disoynurik, Sodium Hypochorie
Chamberlin Distributing CO. INC 4151 Chelan HWY. Wenatchee, Wa 98801	Carzol SP, Dimethoate 4E, Endosulfan 3EC, Gramoxone MAK, Lorsban 4E, Guthion 50W & Azinphos Methyl 50W, Captan 50W, Carbaryl & Sevin 4E, Diazinon 50W, Diazinon AG 500, Dithane AF, Imidan 70 WSB, Lime Sulfur Solution, Thiodan 50W & Endosulean 50W, Vydate L, Fumaphos 60% Phostoxican or Weevilcide, Weedar 64 Acictie Acid, Supreme Oil Solvent Refined LT Paraffinic Distil, Omite 30W, Ridomil Gold, Rubigan EC, Sulfur Microsulf & Microthiol Disperss, Van 32 Fertilizer, Thiram 75 WPG, Methyl Bromide, Ag-Chlor 310, Zinc
Columbia Colstor INC. 410 N. Worthen Wenatchee, Wa 98801	Anhydrous Ammonia, Battery Electrolyte, Battery Lead,
Coles Corner Regen E. Side HWY 207 2.1 MI. N HWY 2 Coles Corner, Wa 98826	Sulfuric Acid
Columbia Colstor INC. Columbia & Orondo Wenatchee, Wa 98801	Anhydrous Ammonia
Columbia Fruit Packers INC. Plant #2 2611 Euclid AVE. Wenatchee, Wa 98801	Methyl Bromide, Anhydrous Ammonia
Columbia Fruit Packers INC. Plant #1 2629 Euclid AVE. Wenatchee, Wa 98801	Anhydrous Ammonia

Dolco Packaging 1121 S. Columbia ST. Wenatchee, Wa 98801	N-Butane, Polystyrene
Dovex Fruit Co. 2833 Euclid AVE. Wenatchee, Wa 98801	Ammonia, Propane, Sodium Hypochorite,
Dovex Fruit Co. 2809 Euclid AVE. Wenatchee, Wa 98801	Ammonia, Sodium Hypochlorits
Dovex Fruit Co. 2811 Euclid AVE. Wenatchee, Wa 98801	Ammonia
Dovex Fruit Co. 305 Ohme Garden RD. Wenatchee, Wa 98801	Ammonia, Propane
Dovex Fruit Co. 1012 Walla Walla ST. Wenatchee, Wa 98801	Propane, Fraon MP39
Dovex Fruit Co. 14781 N. Shamel ST. Entiat, Wa 98822	Freon R-22, Propane
Ed Glenn Distributor INC. 1301 N. Wenatchee AVE. Wenatchee, Wa 98801	Gasoline, Petroleum Distillate, Petroleum Lube Oil,
Independent Warehouse INC. 8500 Main ST. Dryden, Wa 98821	Ammonia
KB Alloys INC. 4400 Kaweck RD. Malada, Wa 98828	Alumina, Aluminum, Aluminium Oxide, Argon, Diesel Fuel #2, Magnesium Oxide, Muriatic Acid, Potassium Aluminum Fluoride, Potassium Fluorobarate, Potassium Fluorotitanate, Propane, Sulfuric Acid, Titanium,
Keyes Fibre Corporation 3715 Chelan HWY Wenatchee, Wa 98801	Bazazol, Bayer Retaminol, Baysize RCW, Liquisize, Baysize, Amres, Bayer Retaminol, Nalcoa, Ajack
LCRD Shop 3410 Wapato RD. Manson, Wa 98831	Diesel Fuel #2, Gasoline
LCRD Water Treatment Plant	

<p>550 Chase AVE. Manson, Wa 98831</p>	<p>Alum, Chlorine, Polymer</p>
<p>LC Pumping Plant SR 150 Manson, Wa 98831</p>	<p>Hydraulic Oil</p>
<p>Longview Fibre Company 17400 Winton RD Leavenworth, Wa 98826</p>	<p>Diesel Fuel #2, Gasoline, Propane, Sulfuric Acid</p>
<p>Manson Growers 1670 Manson Blvd. Manson, Wa 98831</p>	<p>Ammonia</p>
<p>McDougall &amp; Sons INC. 305 Olds Station RD. Wenatchee, Wa 98801</p>	<p>Anhydrous Ammonia</p>
<p>Monitor Storage Facility 3860 Fairview Canyon RD. Monitor, Wa 98836</p>	<p>Liquid Propane Gas, Anhydrous Ammonia</p>
<p>Naumes INC - Chelan WHSE 45 HWY. 150 Chelan, Wa 98816</p>	<p>Anhydrous Ammonia</p>
<p>Norco INC. 1186 S. Wenatchee AVE. Wenatchee, Wa 98801</p>	<p>Oxygen</p>
<p>North Central Petroleum INC. 132 Titchenal Way Cashmere, Wa 98815</p>	<p>Diesel Fuel #2, Gasoline,</p>
<p>North Central Petroleum INC. 2732 Euclid AVE. Wenatchee, Wa 98801</p>	<p>Diesel Fuel #2, Gasoline,</p>
<p>North Central Petroleum INC. 3 Chehalis Wenatchee, Wa 98801</p>	<p>Diesel Fuel #2, Gasoline, Hydraulic Fluid, Kerosene, Motor Oil,</p>
<p>North Central Petroleum INC. 1237 West Woodin AVE. Chelan, Wa 98816</p>	<p>Diesel Fuel #2, Gasoline, Kerosene</p>
<p>Northwest Wholesale INC. 1567 N. Wenatchee AVE. Wenatchee, Wa 98801</p>	<p>Ammonia, Azinphos Methyl, Paraquat, Methyl Bromide, Frometanate Hydrochloride, Dimethoate, Diazinon 50WP, Diazinon AG500,</p>

**CHELAN/DOUGLAS COUNTY LEPC PLAN**

---

Dimethoate, Aluminum Phosphide, Phosmet, Lorsban 4E, Lorsban 50W, Methyl Bromide, Chlorophacinone, Sevin Brand 4F, Seven Brand 80W, Methidathion, Endosulfan, Oxamyl, Ziram 76DF, Zinc Phosphide

Northwest Wholesale INC.  
80 Anderson RD & Chelan Falls  
Chelan, Wa 98816

Azinphos Methyl, Paraquat, Methyl Bromide, Frometanate Hydrochloride, Diazinon 50WP, Diazinon AG500, Dimethoate, Aluminum Phosphide, Phosmet, Lorsban 4E, Lorsban 50W, Chlorophacinone, Sevin Brand 4F, Seven Brand 80W, Endosulfan, Ziram 76DF, Zinc Phosphide

Northwest Wholesale INC.  
5720 HWY. 2  
Cashmere, Wa 98815

Azinphos Methyl, Paraquat, Methyl Bromide, Frometanate Hydrochloride, Diazinon 50WP, Diazinon AG500, Dimethoate, Aluminum Phosphide, Phosmet, Lorsban 4E, Lorsban 50W, Chlorophacinone, Sevin Brand 4F, Seven Brand 80W, Endosulfan, Ziram 76DF, Zinc Phosphide

Oxarc INC.  
291 Ohme Gardens RD.  
Wenatchee, Wa 98801

Oxygen, Ammonia, Chlorine, Carbon Dioxide, Propane, Nitrogen

Pacific Aerospace & electronics  
434 Olds Station RD.  
Wenatchee, Wa 98801

liquid Nitrogen

Phillippi Fruit CO. INC.  
6A Fifth ST.  
Wenatchee, Wa 98801

Ammonia

Rental Service Corp.  
421 S. Wenatchee AVE.  
Wenatchee, Wa 98801

Sulfuric Acid

Stemilt Growers  
4597 Stemilt Hill RD.  
Wenatchee, Wa 98801

Chlorodifluoromethane

Stemilt Growers  
1# warehouse Way  
Wenatchee, Wa 98801

Nitrogen

Stemilt Growers  
4210 Chelan HWY. 97A  
Wenatchee, Wa 98801

Anhydrous Ammonia

Stemilt Growers  
1705 N. Miller  
Wenatchee, Wa 98801

Anhydrous Ammonia

Stemilt Growers  
534 S. Columbia ST.

Anhydrous Ammonia

Wenatchee, Wa 98801

Tree Top Wenatchee Plant  
3981 Chelan HWY.  
Wenatchee, Wa 98801

Ammonia, Carbon Dioxide, Nitrogen, Sodium Hydroxide Solution

Tree Top Cashmere Plant  
200 titchenal Way.  
Cashmere, Wa 98815

Ammonia, Propane, Sodium Hydroxide

Trout Blue Chelan INC.  
10 HWY. 150  
Chelan, Wa 98816

Ammonia

Trout Blue Chelan INC.  
Manson Blvd. & Totem Pole RD.  
Manson, Wa 98831

Ammonia, Propane

Trout Blue Chelan INC.  
100 HWY 150  
Chelan, Wa 98816

Ammonia, Chlorine, Propane

Trout Blue Chelan INC.  
Hwy 150 & Howser RD  
Chelan, Wa 98816

Ammonia Chlorine, Nitrogen, Propane

Trout Blue Chelan INC.  
Second & A ST.  
Chelan, Wa 98816

Ammonia

Trout Blue Chelan INC.  
417 Industrial Way  
Pateros, Wa 98826

Ammonia, Propane

Verizon  
320 Penny RD.  
Wenatchee, Wa 98801

Diesel Fuel, Gasoline

Verizon  
100 S. Chelan  
Wenatchee, Wa 98801

Sulfuric Acid

Verizon  
128 E. Johnson AVE.  
Chelan, Wa 98816

Sulfuric Acid

Wells Hatchery  
24621 SR 97  
Pateros, Wa 98846

Parasite - S

**CHELAN/DOUGLAS COUNTY LEPC PLAN**

---

Wilbur-Ellis  
404 Mission ST.  
Cashmere, Wa 98815

Ammonium Nitrate, Ammonium Sulfate, Dimethyl S, Borax, Calcium Chloride, Calcium Nitrate, Limestone, Endosulfan, Endosulfan Liquid, Paraquat, Petroleum Distill, Phosmet, Potassium Chloride, Sulfur

Wilbur-Ellis  
10221-B Mill RD.  
Peshastin, Wa 98847

Dimethyl S, Endosulfan Liquid, Calcium Polysulfide, Paraquat, Petroleum Distill, Phosmet, Sulfur

Wilbur-Ellis  
1280 S. Wenatchee AVE.  
Wenatchee, Wa 98801

Ammonium Nitrate, Ammonium Nitrate Liquid, Ammonium Sulfate, Azinophos, Azinophos Liquid, Calcium Chloride, Calcium Hydroxide, Calcium Nitrate, Citric Acid, Limestone, Endosulfan, Fenamiphos Liquid, Monoammonium Phosphate, Surfactants Liquid, Oxamyl Liquid, Petroleum Distillates, Potassium Chloride, Silicone Surfactant, Zylene, Monopotassium Phosphate, Phosmet, Pinolene, Potassium Sulfate, Sulfur, Urea,

Wilbur-Ellis  
1680 Wilmoth DR.  
Chelan, Wa 98816

Ammonium Nitrate, Ammonium Nitrate Liquid, Ammonium Sulfate, Azinophos, Azinophos, Borax, Calcium Chloride, Calcium Nitrate, Chlorpyrifos Liquid, Copper Hydroxide, Dimethoate Liquid, Endosulfan, Endosulfan Liquid, Isopropyl Alcohol, Lime Sulfur, Monoammonium Phosphate, Monopotassium Phosphate, Myclobutanil, Non-Ionic Surfactants Liquid, Paraquat, Petroleum Distillates, Phosmet, Potassium Chloride, Propylene Glycol, Sulfur, Urea, Xylene, Zinc Phosphide, Zinc

WSDOT  
Berne  
SR2 MP72.74  
Berne, Wa 98288

Solid Deicer, Diesel Fuel #2, Gasoline, Liquid Deicer

Blewett  
SR 97 MP 178.2  
Blewett, Wa 98826

Solid Deicer, Diesel Fuel #2, Gasoline, Liquid Deicer

Chelan  
SR 150 MP 4.8  
Chelan, Wa 98816

Diesel Fuel #2, Gasoline, Liquid Deicer

Euclid  
2830 Euclid AVE.  
Wenatchee, Wa 98801

Diesel Fuel #2, Gasoline, Liquid Deicer, Striping Paint

Leavenworth  
SR 2 JCT With Mill St.  
Leavenworth, Wa 98826

Diesel Fuel #2, Gasoline, Liquid Deicer

Wenatchee  
1551 N Wenatchee Ave.  
Wenatchee, Wa 98801

Gasoline, Striping Paint

Wenatchee Sand and Gravel 1315 S. WENATCHEE Ave. Wenatchee, Wa 98801	Calcium Chloride, Cement
WWTP 201 N Worthen Wenatchee, Wa 98801	Chlorine
<b>Douglas County:</b>	
Ag Supply SR 97 21318 Orondo, WA	Gasoline, Propane
Ag Supply 220 Grant Road East Wenatchee, WA	Gasoline, Diesel Fuel
Allied Battery Co. Inc. 930 1/2 Valley Mall Parkway East Wenatchee, WA	Sulfuric Acid
BPA Sickler Substation 13294 Lincoln Park Rd East Wenatchee, WA	Battery Electrolyte (Sulfuric Acid)
BPA Columbia Substation 48 BPA Substation Rd Rock Island, WA	Battery Electrolyte (Sulfuric Acid)
BPA Chief Joseph Substation 2450 Star Route 17 NE Bridgeport, WA	Battery Electrolyte (Sulfuric Acid)
BPA Grand Coulee TLM HQ Nearest Town: Grand Coulee	Diesel Fuel #2, Gasoline
C&M Packing 201 S. Union East Wenatchee, WA	Anhydrous Ammonia
Central Washington Concrete 5515 Enterprise Dr East Wenatchee, WA	Cement
Columbia River Orchards/Zirkle Fruit Co. 1510 SR 28	Gasoline, Diesel Fuel #2, Anhydrous Ammonia

Palisades, WA	
Costco #112 375 Highline Drive East Wenatchee, WA	Sulfuric Acid, Lead
Chief Joseph Dam Hwy 17, Pearl Hill Rd Bridgeport, WA	Diesel Fuel #1, Gasoline, Petroleum Distillates, Petroleum Naphtha
Eastbank Hatchery 13246 Lincoln Rock Rd East Wenatchee, WA	Formaldehyde
Lincoln Mutual Service Inc. #1 Rd 6 NE Coulee City, WA	Anhydrous Ammonia, Aqua Ammonia (Ammonium Hydroxide), Nitro-Sol (Ammonium Polysulfide) Thio-Sol, Urea (Ammonium Nitrate), Ammonium Phosphate
Mansfield SR 172 Mansfield, WA	Diesel Fuel #2, Liquid De-Icer
McDougall & Sons 13048 SR2 East Wenatchee, WA	Anhydrous Ammonia
North Central Petroleum Airport Rd Mansfield, WA	Diesel #1, Diesel #2, Gasoline, Kerosene
North Central Petroleum Foster Creek Ave Bridgeport, WA	Diesel #1, Diesel #2, Gasoline, Kerosene
Sprint Communications 201 32nd St NW East Wenatchee, WA	Sulfuric Acid
Stemilt Crown Union Facility 110 Webb St East Wenatchee, WA	Ammonia
Stemilt Growers Inc., JRM CA Facility 88 Ward St. East Wenatchee, WA	Anhydrous Ammonia
Turtle Rock Hatchery	Formaldehyde

Turtle Rock Island  
East Wenatchee, WA

Waterville  
SR 2, MP 149.2  
Waterville, WA

Diesel Fuel #1, Liquid De-Icer, Solid De-Icer

Western Farms Service  
7 Airport Rd  
Mansfield, WA

Anhydrous Ammonia

Western Farms Service  
Barnes Rd & Supplee Rd  
Waterville, WA

Anhydrous Ammonia

Western Farms Service  
North County Road & Airport Way  
Waterville, WA

Anhydrous Ammonia, Ethylhexyl, Ammonium Sulfate

Whitley Fuel/Pacific Pride  
14800 HWY 2  
Waterville, WA

Diesel #1, Diesel #2, Gasoline

Witte Orchards  
1651 Rock Island Rd  
East Wenatchee, WA

Anhydrous Ammonia, Sodium Hypochlorite

**TRANSPORTATION ROUTES:**

Due to the potential of chemicals, especially Ag-Chemicals being transported via private vehicle, almost any road in Chelan or Douglas County can be considered a transportation route. Main transportation routes carrying hazardous materials are:

1. BURLINGTON NORTHERN R.R.  
Main line enters Douglas County at the Grant County line. The mainline continues west to the town of Rock Island. It then enters Chelan County east of Malaga after crossing over the Columbia River. It then continues through Malaga, Wenatchee, Monitor, Cashmere, Dryden, Peshastin, Leavenworth, up the Chumstick and over towards SR2 and exits Chelan County via the tunnel under Stevens pass.

There are about 27 trains over this main line every 24 hours. Two are AMTRAK, the rest are freight trains which carry hazardous chemicals including Chlorine, Anhydrous Ammonia, Molten Sulfur, LPG and other substances.

2. STATE ROUTE 2  
Numerous trucks - mostly gasoline, diesel and LPG.
3. STATE ROUTE 97/97A  
Numerous trucks - mostly gasoline, diesel and LPG.
4. NORTHWEST PIPELINE

Natural gas pipeline entering the County over Colockum Pass and following the Colockum road into Malaga where the pipeline meets the Cascade Natural Gas pipeline. Gas transported in this pipeline **IS NOT ODORIZED**.

5. CASCADE NATURAL GAS PIPELINE  
Starts in Malaga and brings natural gas into the Wenatchee area for both home and commercial service. Line ends at Tree Top on the Chelan Highway.
6. STATE ROUTE 28  
Numerous Trucks- mostly gasoline, diesel and LPG
7. STATE ROUTE 17  
Numerous Trucks- mostly gasoline, diesel and LPG
8. STATE ROUTE 172 Numerous Trucks- mostly gasoline, diesel and LPG

**HAZARDOUS MATERIALS INCIDENT GUIDELINES**

When approaching an incident believed to be a hazardous materials incident, the following suggested guidelines should be followed.

Obtain as much information as possible prior to arrival. Things like UN numbers, wind direction are important. REMEMBER - SAFETY IS PARAMOUNT

Approach the scene from up hill, up wind, and up stream.

Attempted to identify the product without risk to yourself. This can be done by observing location placards, labels, shipping papers, or any other way that can be safely done.

Take note on what is happening. Is there a vapor cloud, is there liquid leaking, is there a solid spilled on the ground? Note what the wind is doing. Note if something is leaking into a watercourse.

Notify the Incident Command agency (WSP) of the situation.

Communicate to incoming units and your communications center what you have.  
DO NOT attempt rescue in a hazardous environment unless you have been properly trained and have the proper PPE.

Establish an isolation area and deny entry.

**APPENDIX A - SUGGESTED RESPONSE SAFETY PLAN**

**GENERAL:**

- The object is to provide procedures for the safe operations during a hazardous materials incident.
- It is the responsibility of the Incident Commander to appoint a **Safety Officer** who will monitor the safety of the conditions during the incident.
- The safety officer has the authority to alter or augment any practice/action considered unsafe.
- It is the responsibility of each responder to report any unsafe or hazardous conditions to his/her supervisor, who in turn will:
- Stop work, if unsafe to continue.
- Notify the Safety Officer of the situation.
  - Correct the condition, if able to do so.
  - All spills/releases must be handled as hazardous until otherwise known.
  - All authorities, policies and statutory charges are secondary to the safety of the responders, recognizing a spill/release cannot be totally free of inherent risk.
  - Personnel shall endeavor to minimize contact with spilled materials
  - Responders shall only perform work within their limits of training and capabilities.
  - Personnel are authorized to refuse to take part in any activities they have reason to believe are not safe.
- The “two in, two out system” shall be utilized.
- Medical pre and post exams will be conducted, decontamination before and after enter will be utilized.
- Decontamination of all personnel will be effected as needed.

**SITE CHARACTERISTICS AND ANALYSIS:**

Upon arrival at a potential hazardous materials incident a preliminary evaluation of the scene should be performed to identify any hazards. This must be done from a safe distance. This evaluation may include, but not limited to:

- Materials/chemicals being release.
- Visible vapor clouds.
- Current wind direction
  - Potential ignition sources (remember static electricity)
  - Physical hazards, such as slip, trip, fall threats.
  - Confined space entry.
  - Other general safety hazards.

All conditions which indicate inhalation or skin absorption hazards which are immediately dangerous to life or health should be identified.

**WORK PRACTICES:**

- Responders entering hot zones will do so only if appropriately trained and wearing proper PPE.
- Accurate accounting of all personnel will be kept.
- Personnel are not to open or move any drums or containers, unless it is safe to do so, unless directed otherwise by the IC. Unlabeled or unidentified drums/containers shall be considered hazardous and treated as such.
- Attempt to identify unknown materials by:
  - Examining labels from a safe distance (binoculars)
  - Informants/property owner/facility representative
  - Material Safety Data Sheets
  - Shipping papers
  - Any other means not exposing responders to potential contamination.
- The Incident Commander, if qualified, will determine the need and level of site security.
- The Command Staff will follow all actions to take as determined by technical specialist working with the IC and command staff.

**DECONTAMINATION:**

- Before any response personnel enters a hot zone (where contamination of their PPE clothing, equipment or person is a possibility), decontamination must be established.
- Response personnel shall not enter an area which is contaminated without a proper decontamination method in place.
- It is the responsibility of the Safety Officer to ensure proper decontamination is in place. A decontamination officer shall be appointed.

**SITE EMERGENCIES:**

During specific responses to hazardous materials incidents, the command staff should develop a site specific plan which shall include, but not limited to:

- Personnel roles and lines of authority.
- Emergency recognition and prevention.
- Safe distances and places of refuge.
- Site security and control
  - Emergency evacuation routes and procedures.
  - Emergency decontamination.
  - Emergency medical procedures.
  - Emergency alerting procedures.
  - Personal Protective Equipment (PPE) requirements.

It is the responsibility of the command staff to transmit the information in the emergency plan, verbal or written, to all response personnel under their control. The command staff includes the IC, operations, logistics, planning, finance and administration. A safety officer, liaison and PIO are also part of the command staff.

**SITE CONTROL:**

- Personnel will respect the exclusion zone established and will not enter the zone unless there is a need to do so and the response personnel are appropriately trained and equipped.
- The safety officer should establish site specific control plan to prevent responder contamination. It includes, but is not limited to;
- Site map with work and/or exclusion zones shown.
- Use of the “two in, two out system”.
- Site communications.
- Identification of safe work practices.
- Identification of the nearest medical assistance/facility and methods of transport.

**MEDICAL SURVEILLANCE:**

Response personnel who may have come in contact with a hazardous substance shall have physical examination after a potential exposure is suspected.

The Medical team must provide for pre and post entry vital sign monitoring.

**ILLUMINATION:**

All areas shall be adequately illuminated.

**TRAFFIC SAFETY:**

- Proper safety precautions will be taken when response personnel work within close proximity of a roadway.

- Traffic control is the responsibility of the area's law enforcement agency, coordinated with the safety officer.

**APPENDIX B - EVACUATION AND MOVEMENT**

- PRIMARY AGENCIES:** Chelan County Sheriff's Office  
Douglas County Sheriff's Office  
Wenatchee Police Department  
East Wenatchee Police Department  
Elected Authorities
- SUPPORT AGENCIES:** Chelan/Douglas Emergency Management  
American Red Cross / Human Services Organizations  
Chelan/Douglas Public Works  
Chelan/Douglas Fire Agencies  
Executive Authorities  
Public Transit - LINK  
Other area state and federal Law Enforcement agencies

**INTRODUCTION**

**Purpose:**

The purpose of this Emergency Support Function is to coordinate efforts in safely evacuating the public from a threat to their life and/or health.

**Scope:**

Evacuation and movement involves the coordination of varying agencies and good communications with the public. Evacuation and movement is the responsibility of public safety and the elected authorities of a jurisdiction. This applies to those agencies and others necessary for an evacuation.

**Limitations:**

An emergency or disaster situation involving Chelan and/or Douglas County or their communities could require the evacuation of a large number of people in or near a threatened or stricken area. However, the coordination of a major evacuation may be extremely difficult due to several local conditions including the possible isolation of the area to be evacuated and the difficulty of providing sufficient warning and means of transportation for those in rural areas. This is especially true for those individuals who are at risk medically, the elderly, "latch key children" and the handicapped.

In addition, although an evacuation can be ordered by government, people cannot be forced by government to leave. Government has only the responsibility to warn and advise the public to evacuate.

**POLICIES**

The Incident Commander (IC) of a particular situation has the authority to call for an evacuation to protect the life and health of the populous immediately in harms way.

The Law Enforcement agency of an affected jurisdiction is operationally in charge of evacuations within their area of responsibility.

The elected Authority of the affected jurisdiction has the ultimate responsibility for any and all evacuations. This is especially true for any evacuation that will be extended in nature or is not immediately threatening the health and safety of the populous.

**SITUATION**

**Planning Assumptions:**

- Individuals and families may be displaced from their homes and may be provided shelters by one or more volunteer organizations.
  - Approximately 10% of the populous may seek shelter in organized shelters. The rest usually will find their own through friends, family, or commercial sources. However, displaced persons should make contact with the American Red Cross personnel at the shelter for tracking purposes.
  - Displaced persons may require transportation to shelter facilities. This may be provided for by private transportation.
  - Shelter operations will have sufficient sanitation and cooking facilities, including cold and frozen storage, to maximize the use of available products.

### **CONCEPTS OF OPERATIONS**

#### **General:**

- Unless an evacuation is of an emergency nature, the Elected Authority for the affected County or political sub-division will coordinate with the responsible law enforcement agency and emergency management regarding the decision to evacuate.
- The Chelan County or Douglas County Department of Emergency Management will coordinate with the State Emergency Management for additional state or federal assistance, if required.
  - Operational priorities will be established by the senior Law Enforcement Officer working with the other responding agency head from the effected county's Emergency Operation Center, mobile Command Post, or other established Command Center.

Evacuation levels have been established as follows:

- **Level 1** - Public is warned that current or projected threats from hazards are severe and this is the time for preparation and precautionary movement of persons with special needs, mobile property, and livestock.
- **Level 2** - Conditions indicate a good probability that hazards will severely limit our ability to provide emergency service protection and hazardous conditions may threaten property and/or homes.
- **Level 3** – Current conditions present specific and immediate threat(s) to the life and safety of persons within the area. Persons are advised to evacuate immediately. Roadblocks and 24-hour patrols will be established and residents will not be allowed to return until conditions are safe.
- Warning will be accomplished by all means available including, but not limited to EAS, personal contact, postings etc.
- For planning purposes it is assumed private vehicles may provide the means of evacuation for the majority of people in the evacuation zone. Public transportation and the state school bus response group resources will be utilized, if possible, to evacuate those without other means of transportation.

#### **Organization:**

The responsibility of carrying out Evacuation falls with the Law Enforcement agency of the affected jurisdiction. In the event a disaster affects more than one jurisdiction, the concepts of the Incident Command System, Unified Command will be followed.

#### **Procedures:**

Existing agency procedures for the operations of shelters, feeding and movement of the populous will be followed.

#### **Preparedness Activities:**

##### Primary Agencies

- Develop and maintain evacuation procedures and ensure personnel are trained in the implementation of these procedures.

- Develop and maintain procedures to coordinate with human services organization dealing with the opening of shelters and reception areas.

Support Agency - Red Cross

- Develop and maintain procedures for handling of displaced persons from an evacuation.
- Develop a volunteer family preparedness program.
- Develop and maintain a 24 hour contact / call-out procedures so public safety can contact.

Other Support Agencies

- Develop and maintain procedures on their roles and responsibilities during an evacuation.
- Ensure personnel are trained in the implementation of their roles and responsibilities during an evacuation.

**Response Activities:**

Primary Agencies - Law Enforcement

- Has the responsibility for implementing and coordinating an areas emergency evacuation. This is done in the event of a situation which immediately threatens an area and there is no time to obtain a proclamation from elected officials.
- Is responsible for determining when and how the public can re-enter the evacuated area(s).
- Provide security for evacuated areas.
- Document evacuation status and disseminate status to appropriate personnel, agencies and the public on a continual and timely basis.

Support Agency - Incident Commander

- In the event an incident requires an emergency evacuation, such as a Hazardous Materials incident, the incident commander has emergency authority to call for an emergency evacuation of a potentially affected area.
- Alert the Red Cross as soon as possible for the opening of shelters.
- Must document justification for calling for an evacuation.
- Must advise the Legislative Authority (ies) for the affected jurisdictions as soon as practical.

Support Agency – Legislative (Elected) Authority

Are directly responsible for the decision, proclamation, and issuing evacuation orders to evacuate areas within their jurisdictions. Justification or reasons for the threat to life or property of local citizen must be well documented.

Support Agency - Emergency Management

- Provide support to area law enforcement agencies, as appropriate.
- Coordinate public information / instructions with local public safety agencies and the media.
- Act as the point of contact with the Red Cross for shelter opening, tracking of displaced persons and other activities as appropriate.

Support Agency - Red Cross

Is responsible for the sheltering and tracking of displaced citizens (Disaster Welfare Inquiry) due to an evacuation. The American Red Cross may also provide; mental health services, feeding and clothing assistance, and other services in support of displaced persons.

Support Agency - Public Works or Transportation Land Services

- Assist with request for additional personnel.
- Provide traffic control signs, barricades, etc.

- Assist in the determination of safe evacuations routes.

Support Agency - LINK

- Provide transportation (buses) for:
  - Temporary shelters.
  - Movement of citizens out of an effected area, as needed.
  - Provide liaison at the Emergency Operations Center, as appropriate.
- 8. Acts as transportation coordinator during an evacuation, as appropriate.

**RESPONSIBILITIES**

**Primary Agencies:**

Performing evacuations for the protection of the public and coordinating the provisions of this Emergency Support Function.

**Support Agencies:**

Support the Primary Agencies goals in the accomplishment of evacuation and movement.

**RESOURCE REQUIREMENTS:**

Trained personnel.  
Reception areas and tracking of displaced persons procedures.  
Equipment to facilitate moving the populous, such as:  
Vehicles  
Barricades  
Communication equipment

**GENERIC EMERGENCY RESPONSE PLAN CHECKLIST**

<b>Task</b>	<b>Assigned person</b>	<b>Time done</b>
Identify the Hazard & Establish ICS		
Establish an IAP (incident plan strategy & tactics)		
Establish PIO, safety and liaison officers		
Establish Direction & Control (Control Zones)		
Warn impacted populations		
Isolate and/or evacuate		
Implement emergency shutdown procedures		
Account for personnel		
Attend to injured, as possible		
Identify released material, if possible		
Evaluate resources available and needed		
Establish site security		
Establish Decon, EMS, Safety Officer		
Call for assistance		
Notify as required by law		
Evaluate damages or impacts		
Respond as appropriate		
Monitor and constantly evaluate efforts		
Demobilize		
Submit reports and evaluate incident		
Hold critique & Terminate Incident		

**EMERGENCY RESOURCES**

**HAZ-MAT PHONE LIST**

Ecology spill response, Yakima	<b>800-258-5991</b> (24 hr)
Dept. of Health / radiation incidents	<b>206-682-5327</b> (24 hr)
Chemtrec	<b>800-424-9300</b> (24 hr)
National Response Center	<b>800-424-8802</b> (24 hr)
State Emergency Management	<b>800-258-5990</b> (24 hr)
Poison center, Yakima	<b>800-572-9176</b> (24 hr)
Washington State Patrol (Wenatchee)	<b>663-9721 ext. 0</b> (24 hr)
Chelan County Emergency Management	<b>667-6863</b>
	<b>663-9911</b> (After hours)
Douglas County Emergency Management	884-0941
	663-9911 (After hours)
Wenatchee Fire Department	<b>664-3913</b>
Poison Control Center - Washington State	<b>800-709-0911 Unlisted</b> (24 hr)
	<b>800-572-9176</b> (24 hr)
Bureau of Explosives / Association of R.R.	<b>202-639-2222</b> (24 hr) or <b>719-585-1881</b>
53rd Explosive Ordinance Detachment -Yakima	<b>509-457-8992</b> (24 hr)

The following are names and numbers for local ag-chemical warehouse contacts. They will give limited technical advise and depending upon the circumstances assist in clean up of an ag-chemical product.

**Northwest Wholesale**

Office numbers:

Wenatchee - 662-2141                      Cashmere - 782-3363                      Chelan - 682-5821

Contacts home numbers:

Jim Standarford	663-4716
Hans Hirschberger	682-4298
Nate Squires	884-3837
Matt Files	667-2107

**Wilbur-Ellis**

Office numbers:

Wenatchee - 663-8753 / 54                      Cashmere - 782-2301                      Chelan - 682-5315

Contacts home numbers:

Harold Peebles	682-5510	Cell numbers	669-2646
Ken Bossen	663-8358		669-2635
Dave Dahlen	884-8677		421-6008
Fred Smith	782-1435		669-2647
Brian Hendricks	682-3358		669-2631

**Local Response Resources**

Combustible Gas Indicators (CGI) MSA model 261 will indicate LEL and O<sub>2</sub> concentration.

Chelan County Emergency Management  
Chelan County FD 3  
Chelan

Heavy Equipment (See page 29 for call out procedures)

Chelan/Douglas County Road Department

City street departments

**Petroleum off-loading capabilities**

**1. Apple Valley Petroleum**

Business phone: 662-5005

After hours call: John Files - 663-1233 or Wes Childress - 662-1261

[Will off-load from their trucks or any others. Can off-load gasoline or diesel.]

**2. Cascade Transport**

24 hour phone: 662-5823 owner: Gary DeChenne

[Cascade transport is a common carrier and will off-load from their trucks or other trucks. Can off-load gasoline or diesel.]

**LOCAL PUBLIC WORKS AFTER HOURS  
CALL OUT PROCEDURES FOR HEAVY EQUIPMENT**

Resources such as dump trucks, graders and barricades can be obtained from local public works/street departments. The following are the after hour contact procedures for those departments.

**Chelan County Public Works**

Contact Chelan County Sheriff's Office and have them page the duty PW foreman.

24 Hour number for Sheriff's dispatch – 509-663-9911

**Chelan County cities**

Cashmere - call their duty pager 782-3513

Chelan - call out through Rivercom 509-663-9911

Entiat - contact through Public Works Bob Whitehall 784-1579 or Clerk Karen Smith 784-1539

Leavenworth - call personnel in this order

1. Mike Deason - 548-4307 Parks Water Sewer

2. Terry Gildersleeve - 548-4050 Field Super

Darryl Parson - 548-3119 Asst super

Scott Hugill 548-3207 City Admin

Wenatchee - Call out through Wenatchee control (fire dispatch) 664-5296

**Douglas County Public Works**

Contact Douglas County Sheriff's Office and have them page the duty PW foreman.

24 Hour number for Sheriff's dispatch – 509-884-1535

**Douglas County cities**

East Wenatchee – Street Department Bob Goodman 509-884-2924

Bridgeport – Public Works John Troutman 509-686-6541

Mansfield – Contact through the Douglas County Sheriff's Office 884-1535

Rock Island – Contact Mayor Angela Larson 884-5034 or Russell Clark 884-5034

Waterville – On call Public Works supervisor (pager) 664-7489

**In the event that Public Works/Street Department personnel are called to assist in a hazardous materials incident they should be considered Skilled Support Personnel and fall under 29 CFR 1910.120(q)(4), which states:**

“Skilled support personnel. Personnel, not necessarily an employer's own employees, who are skilled in the operation of certain equipment, such as mechanized earth moving or digging equipment or crane and hoisting equipment, and who are needed temporarily to perform immediate emergency support work that cannot reasonably be performed in a timely fashion by an employer's own employees, and who will be or may be exposed to the hazards at an emergency response scene, are not required to meet the training required in this paragraph for the employer's regular employees. However, these personnel shall be given an initial briefing at the site prior to their participation in any emergency response. The initial briefing shall include instruction in the wearing of appropriate personal protective equipment, what chemical hazards are involved, and what duties are to be performed. All other appropriate safety and health precautions provided to the employer's own employees shall be used to assure the safety and health of these personnel.”

**APPENDIX C - NOTIFICATION OF "GOOD SAMARITAN" LAW**

You have been requested to provide emergency assistance by a representative of a hazardous materials incident command agency. To encourage your assistance, the Washington state legislature has passed "Good Samaritan" legislation (RCW 70.136.050) to protect you from potential liability. The law reads, in part:

"Any person or public agency whose assistance has been requested by an incident command agency, who has entered into a written hazardous materials assistance agreement . . . . at the scene of the incident pursuant to . . . . RCW 70.136.070, and who, in good faith, renders emergency care, assistance, or advice with respect to a hazardous materials incident, is not liable for civil damages resulting from any act or omission in the rendering of such care, assistance, or advice, other than acts or omissions constituting gross negligence or willful or wanton misconduct."

The law requires that you be advised of certain conditions to ensure your protection:

1. You are not obligated to assist and you may withdraw your assistance at any time.
2. You cannot profit from assisting.
3. You must agree to act under the direction of the incident command agency.
4. You are not covered by this law if you caused the initial accident.

I have read and understand the above:

\_\_\_\_\_

Date: \_\_\_\_\_ Time: \_\_\_\_\_

I am a representative of a designated hazardous materials incident command agency and I am authorized to make this request for assistance.

(Name) \_\_\_\_\_

(Agency) \_\_\_\_\_

Date \_\_\_\_\_ Time \_\_\_\_\_

**APPENDIX D - DISTRIBUTION LIST**

**FIRE AGENCIES**

Chelan County Fire District 1	Douglas County Fire District 1
Chelan County Fire District 3	Douglas County Fire District 2
Chelan County Fire District 4	Douglas County Fire District 3
Chelan County Fire District 5	Douglas County Fire District 4
Chelan County Fire District 6	Douglas County Fire District 5
(Monitor; Dryden; Peshastin; Blewett Pass)	Douglas County Fire District 8
Chelan County Fire District 7	City of Bridgeport Fire Department
Chelan County Fire District 8	Okanogan/Douglas Fire Dsitric #15
Chelan County Fire District 9	
City of Cashmere Fire Department	
City of Wenatchee Fire Department	

**LAW ENFORCEMENT AGENCIES**

**Chelan County**

Washington State Patrol, District 6	Chelan County Sheriff's Office
Wenatchee Police Department	

**Douglas County**

Washington State Patrol, District 6	Douglas County Sheriff's Office
East Wenatchee Police Department	

**COMMUNICATION CENTERS**

**Chelan County/Douglas County**

RiverCom	
Central Washington Interagency Coordination Center	(CWICC)

**EMERGENCY MEDICAL**

**Chelan County**

Ballard Ambulance	Lifeline Ambulance
Cascade Ambulance	Lake Chelan Ambulance
EMS local council	Northwest Med-Star

**Douglas County**

Ballard Ambulance	Lifeline Ambulance
Waterville Ambulance	Mansfield Ambulance
Bridgeport Ambulance	Airlift Northwest

**ELECTED LOCAL LEGISLATIVE AUTHORITIES**

**Chelan County**

Chelan County Commission	City of Cashmere
City of Chelan	City of Entiat
City of Leavenworth	City of Wenatchee

**Douglas County**

Douglas County Commission	City of East Wenatchee
City of Bridgeport	City of Mansfield
City of Rock Island	City of Waterville

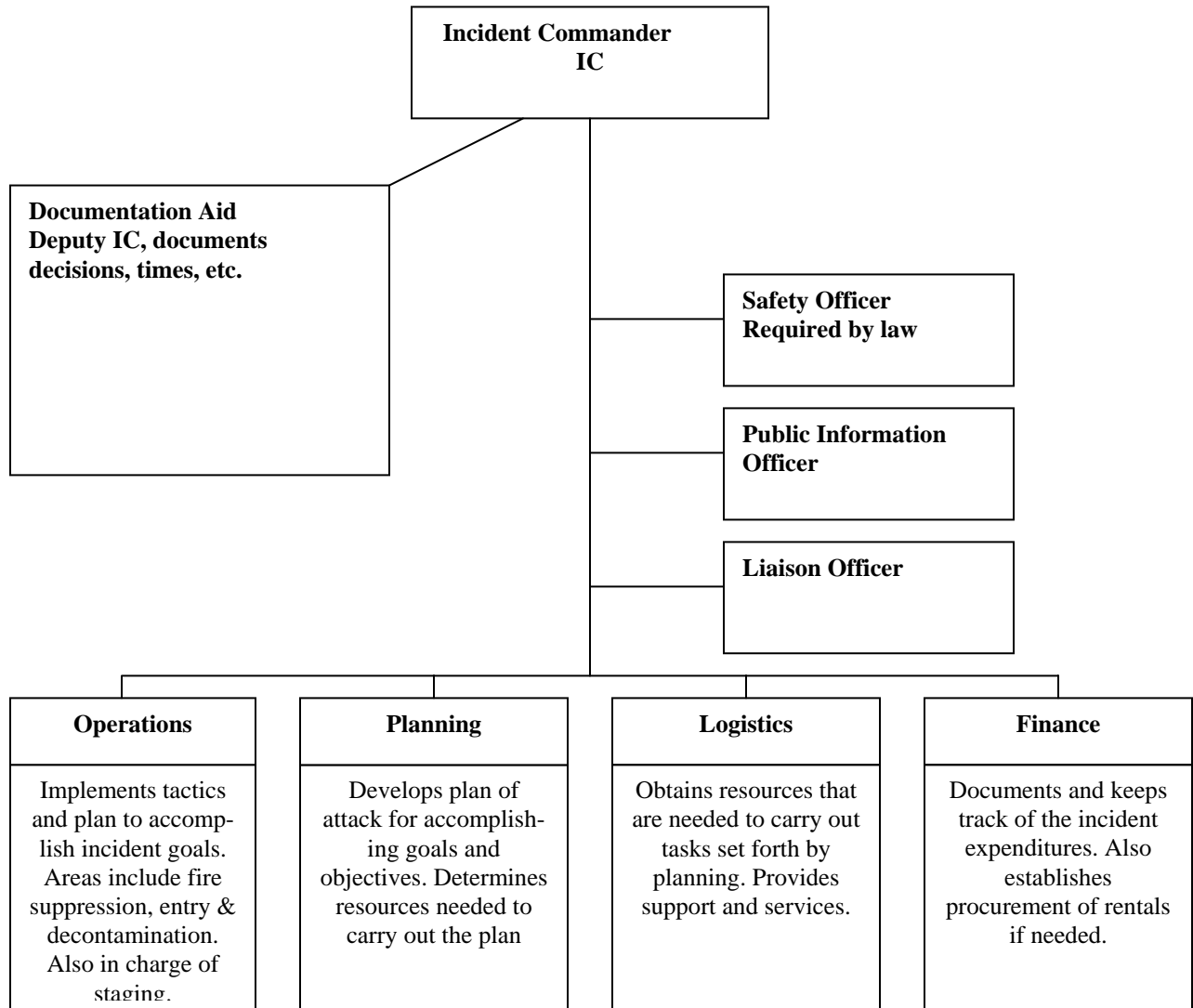
**OTHER GOVERNMENT AGENCIES**

Chelan/Douglas County Public Works	Chelan County Prosecuting Attorney
Chelan/Douglas County Health District	Douglas Co. Emergency Management
Department of Ecology, Central Region	Douglas County Pros. Attorney
Chelan County Emergency Management	City of Wenatchee Emergency Management
Washington State Department of Emergency Management	

**PRIVATE FACILITIES**

Aluminum Company of American (ALCOA)	Beebe Orchards
Blue Bird	Blue Chelan/Trout
Blue Star Growers	Cashmere Fruit Exchange
Chamberlin Distributing	Columbia Fruit
Dovex	H & H Orchards
Independent Warehouse	McDougall & Son
Northwest Wholesale	Naumes
Oxarc	Stemilt Growers
Tree Top	Wilbur-Ellis

APPENDIX E - BASIC INCIDENT COMMAND SYSTEM FLOW CHART



**APPENDIX F - DEFINITIONS**

<b>ALOHA</b>	<i>Aerial Location of Hazardous Atmospheres</i> - Computer program developed by the National Oceanographic Atmospheric Administration (NOAA) for modeling plumes of chemical releases.
<b>ARC</b>	<i>American Red Cross</i>
<b>CAMEO</b>	<i>Computer-Aided Management of Emergency Operations</i> - Computer program developed by the National Oceanographic Atmospheric Administration (NOAA) to assist in the management of hazardous materials incidents. Included Response Information Data Sheets (RIDS) which gives information on chemical properties, health hazards, fire hazards, first aid and proper protective equipment.
<b>CCFD</b>	<i>Chelan County Fire District</i> - Chelan County has eight (8) fire districts (1, 3, 4, 5, 6, 7, 8, and 9) In additions to the fire districts there are two (2) city fire departments (Cashmere and Wenatchee).
<b>CCSO</b>	<i>Chelan County Sheriff's Office</i>
<b>Cold Zone</b>	Area of a hazardous materials incident where there is no threat of contamination. Area were command and support functions are established. Also known as the Green Zone.
<b>DCSO</b>	<i>Douglas County Sheriff's Office</i>
<b>DEM</b>	<i>Department of Emergency Management</i>
<b>DOE</b>	<i>Washington State Department of Ecology</i>
<b>DOT</b>	<i>Washington State Department of Transportation</i>
<b>EAS</b>	<i>Emergency Alerting System</i> - Replaced the Emergency Broadcast System (EBS) for communicating emergency information electronically to the public via Television and Radio.
<b>EMD</b>	<i>Emergency Management Division</i> - State level emergency management office.
<b>EMS</b>	<i>Emergency Medical Service</i> - Medical First Responders, such as paramedics and emergency medical technicians.
<b>EOC</b>	<i>Emergency Operations Center</i> - Location established for coordination of information and establishment of policy from legislative authorities during a disaster situation. Primary EOC for Chelan County is located in the Basement of the Chelan County Courthouse.
<b>EPA</b>	<i>United States Environmental Protection Agency</i>
<b>Evacuation</b>	The process of moving persons out of an area effected or potentially effected by a disaster situation.
<b>FEMA</b>	<i>Federal Emergency Management Agency</i>

<b>FIRE MOB</b>	<i>Fire Mobilization Plan</i> - Washington State plan for the mobilization of resources throughout the state for response to major incidents.
<b>HAZ-MAT</b>	<i>Hazardous Materials</i>
<b>HAZWOPER</b>	<i>Hazardous Waste Operations and Emergency Response</i> - Set forth in 29 CFR 1910.120.
<b>Hot Zone</b>	The exclusion zone. Area which is contaminated. Also known as the Red Zone
<b>IC</b>	<i>Incident Commander</i> - Person in charge of an incident. Usually the senior office on-scene.
<b>ICS</b>	<i>Incident Command System</i> , Accepted system to manage an incident (functional management). Can expand or contract to the size of an incident.
<b><i>In-Place-Protection</i></b>	Have persons stay inside during an incident. Used primarily during hazardous materials incidents.
<b>IDLH</b>	<i>Immediately Dangerous to Life or Health</i>
<b>LEPC</b>	<i>Local Emergency Planning Committee</i> , Made up of local public safety, community members, chemical facility representative, and other to prepare and plan for hazardous materials emergencies. Required under SARA Title 3.
<b>LINK</b>	Areas local public transportation (buses) system for Chelan and Douglas Counties.
<b>NIMS</b>	<i>National Incident Management System</i> , National Incident Management System (NIMS) integrates effective practices in emergency preparedness and response into a comprehensive national framework for incident management.
<b>OSC</b>	<i>On-Scene Coordinator</i>
<b>PPE</b>	<i>Personal Protective Equipment</i>
<b>PSAP</b>	<i>Public Safety Answering Point</i> , Communication center where public safety 9-1-1 calls are answered and units dispatched.
<b>PUD</b>	<i>Public Utility District</i>
<b>RCW</b>	<i>Revised Code of Washington</i>
<b>RIDS</b>	<i>Response Information Data Sheets</i> - A section of the CAMEO program and provides information for responders on appropriate actions to take when faced with a hazardous materials incident.
<b>SAR</b>	<i>Search and Rescue</i>
<b>SARA</b>	<i>Superfund Amendments and Reauthorization Act</i> - Public law passed in 1986 to require community planning for hazardous material emergencies. Also allows the public to be provided access to information about chemicals in their community.
<b>SOP</b>	<i>Suggested Operating Procedures</i>

**WAC**            *Washington Administrative Codes*

**Warm Zone**    The area between the Hot and Cold zones where decontamination functions are set up. Also referred to as the contamination reduction zone or the Yellow Zone.

**WSP**            *Washington State Patrol*

**APPENDIX G – HAZARDOUS MATERIALS RESPONSE TEAMS (WA)**

**STATE OF WASHINGTON  
HAZARDOUS MATERIALS RESPONSE TEAMS**

The following are Haz-Mat response teams which have stated they will respond statewide, if requested. If any of these teams are requested they do follow the Incident Command System, signing under “Good Sam”, and cost recovery as appropriate.

It should be noted the State Fire Mobilization Plan can be used to request assistance for a hazardous materials incident.

**PUBLIC**

Team Name	Base	Statewide if Requested	Contact Person	Contact Phone	24-hr. Phone	Address	FAX
<b>Aberdeen</b>	Aberdeen FD	No	Kelly Niemi			Aberdeen FD 700 W. Market Aberdeen WA 98520	
<b>Auburn</b>	Auburn FD	Yes	B/C Stan Laatsch  Barry Rickert			Auburn FD 1101 D St NE Auburn WA 98002-4016	
<b>Eastside</b>	Bellevue FD	No	Capt. Mark Moulton			Bellevue FD 766 Bellevue Way SE Bellevue WA 98004	
<b>Everett</b>	Everett FD	Yes	Art White			Everett FD 2811 Oakes Ave Everett WA 98201	
<b>Federal Way</b>	Federal Way FD	Yes	B/C Pat Kettenring			Federal Way FD 31617 - 1 <sup>st</sup> Ave S Federal Way WA 98003	
<b>Graham/ Central Pierce</b>	Central Pierce Fire & Rescue	No	B/C Robert Park			Graham Fire & Rescue 10012 - 187 <sup>th</sup> St E	

**CHELAN/DOUGLAS COUNTY LEPC PLAN**

<b>Kent</b>	Kent Fire & Life Safety	Yes	Dominic Marzano	Graham WA 98338 Kent Fire & Life Safety 24611 - 116 <sup>th</sup> Ave SE Kent WA 98031
<b>Lynnwood SW Snohomish</b>	Lynnwood FD	Yes	Gregg Sieloff Lynnwood Fire  Lyn Gross	Lynnwood FD 19100 - 44 <sup>th</sup> Ave W  Lynnwood WA 98046-5008  ESCA 23607 Hwy 99 Suite 3-C Edmonds WA 98026
<b>Marysville</b>	Marysville FD	N/A	Scott Kreiman  See Lynnwood per ESCA	Marysville Fire District 1635 Grove St.
<b>Port of Moses Lake Public Safety</b>	Moses Lake Airport	No	Robert Crozier	Port of Moses Lake Public Safety 7810 Andrews St Moses Lake WA 98837
<b>Port of Seattle</b>	POS/SeaTac Airport FD	Yes	Lt. Doug Larson	Port of Seattle FD 2400 S. 170 <sup>th</sup> St Seattle WA 98158
<b>Puyallup</b>	Puyallup FD	Yes	B/C Dennis Lawson	Puyallup FD 902 - 7th St NW Puyallup WA 98371
<b>Renton</b>	Renton FD	No	B/C Mike Moeller  Lt. Kris Weiland	Renton FD 1055 South Grady Way Renton WA 98055
<b>Seattle</b>	Seattle FD	No	A/C A.D. Vickery  D/C Robert Lomax	Seattle FD 301 - 2nd Ave S Seattle WA 98104

**CHELAN/DOUGLAS COUNTY LEPC PLAN**

<b>SERP</b>	Bellingham FD	No	Fred Wefer		Whatcom Co Building Services 5280 Northwest Dr. Bellingham WA 98226-9097
<b>Spokane</b>	Spokane FD	Yes	B/C Ken Kirsch		Spokane FD 44 W Riverside Spokane WA 99201
<b>Tacoma</b>	Tacoma FD	Yes	A/C Jeff Jensen		Tacoma FD 901 S Fawcett Tacoma WA 98402- 5699
<b>Tri-County HazMat Response Group</b>	Richland FD	Yes	B/C Ted Ricci		Richland FD 1000 George Washington Way Richland WA 98352
<b>Tukwila</b>	Tukwila FD	Yes	Marty Grisham		Tukwila FD 444 Andover Park E Tukwila WA 98188
<b>Vancouver Hazmat 81</b>	Vancouver FD	Yes	Dan Monaghan		Vancouver FD 7110 N.E. 63rd St Vancouver WA 98661
<b>Walla Walla</b>	Walla Walla FD	Yes	Lt. Chuck Streamer		Walla Walla FD 200 South 12th Ave Walla Walla WA 99362
<b>WSU</b>	Pullman	Yes	Fred Miller		Washington State University Environmental Health & Safety PO Box 641172 Pullman WA 99164- 1172
<b>Yakima Valley NH3</b>	Sunnyside Fire Dept.	No	B/C Lloyd Hazzard		Sunnyside Fire Department 513 S 8th St  Sunnyside WA

**CHELAN/DOUGLAS COUNTY LEPC PLAN**

				98944
<b>Yakima Fire Department</b>	Yakima Fire Dept.	No	Brian Schaeffer	Yakima Fire Department 401 N Front St Yakima WA 98901
<b>Greater Palouse HazMat Team</b>	Pullman Fire		Mike Heston	Pullman Fire Department 620 Grand Ave Pullman WA 99103

**FEDERAL**

Team Name	Base	Statewide if Requested	Contact Person	Address
<b>Fairchild</b>	Fairchild AFB	No	Chief Bob Mirasole  Jeff Sanborn  Bill Nowlin	92 CES/CEF 1001 Boston Ave Fairchild AFB WA 99011
<b>Fort Lewis</b>	Fort Lewis	Yes	Jim Sheline	Public Works Attn: Jim Sheline AFZH-PWE/MS-17 PO Box 39500 Bldg 1210 Fort Lewis WA 98433
<b>Hanford</b>	Hanford FD	No	Chief Bill Hayes  Bill MacKnight	Hanford Fire Dept. Po Box 1000  MS 53-97 Richland WA 99352
<b>McChord</b>	McChord AFB	Yes	Lt. Brett Stohr	McChord AFB FD 62 CES/CEF 555 "A" St McChord WA 98438-1325
<b>NAVSUBASE Bangor</b>	Silverdale	Yes	John Arruda	NAVSTA – Bangor Environmental

**CHELAN/DOUGLAS COUNTY LEPC PLAN**

<b>Naval Magazine Indian Island</b>	Indian Island FD	Yes	Capt. Stephen Brunette
<b>Puget Sound Federal Fire Dept</b>	Puget Sound Naval Shipyard	No	John Arruda

(360)396-4800

Code #B452 1101 Tautog Circle Silverdale WA 98315-1087
Department of the Navy Naval Magazine Indian Island 100 Indian Island Rd Port Hadlock WA 98339-9723
Puget Sound Federal FD Code N3212 120 S. Dewey St. Bremerton WA 98314-5001

**PRIVATE**

<b>Boeing</b>	Boeing	Limited	Gary Gordon
---------------	--------	---------	-------------

Boeing Company MS 3U-67 PO Box 3707 Seattle WA 98124
---